

## Product Specifications

Size	Width	Ratio	Rim	LI	SI	POR
30X9.50R15LT			15	104	Q	POR
LT235/85R16	235	85	16	120/116	Q	POR
LT225/75R16	225	75	16	115/112	Q	POR
LT245/75R16	245	75	16	120/116	Q	POR
LT265/75R16	265	75	16	123/120	Q	N.A
LT265/70R17	265	70	17	121/118	Q	POR
LT265/65R17	265	65	17	120/117	Q	POR
LT265/70R18	265	70	18	124/121	Q	N.A

 **TRIANGLE**  
*Tires for Life*



 **TRIANGLE**  
*Tires for Life*

**GripX<sup>MT</sup>** TR281

Whatever life throws at you

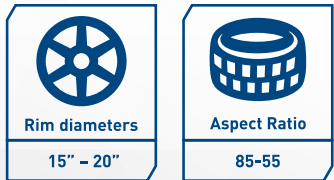


[www.triangle.com.cn](http://www.triangle.com.cn)

**All New Mud-Terrain Tire**

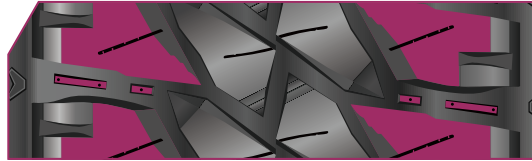


- The **GripXMT** Mud Terrain tire is focused on the off road enthusiast and for those consumers who value an aggressive design to match their vehicles and personality.
- Superior toughness and traction to manage extreme off road with balanced on-road performance.



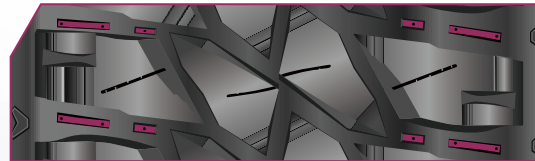
## Features and Benefits

### Aggressive block design with large shoulder grooves



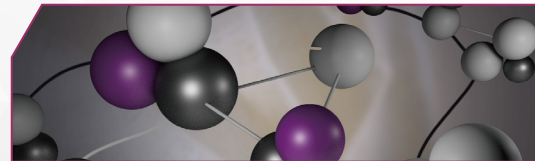
For extreme off road grip  
Resulting in superior off-road performance

### Strategically placed stone ejectors



For release of trapped stones and mud  
Resulting in high traction & preventing damage

### New advance tread compound featuring functional polymers in combination with natural rubber



For increased tread durability, self cleaning and high carrying capacity  
Resulting in improved resistance to tearing and punching and excellent grip in rocky conditions

### Stair step block face design



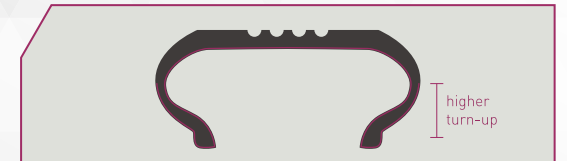
For aggressive gripping and climbing capability  
Resulting in greater bite for off-road traction in sandy and muddy conditions

### Reinforced high strength carcass structure design



For enhanced climbing ability and steering stability on road and off-road  
Resulting in effective prevention of damage

### High sidewall turn-up



For improved sidewall strength  
Resulting in prevention of sidewall damage